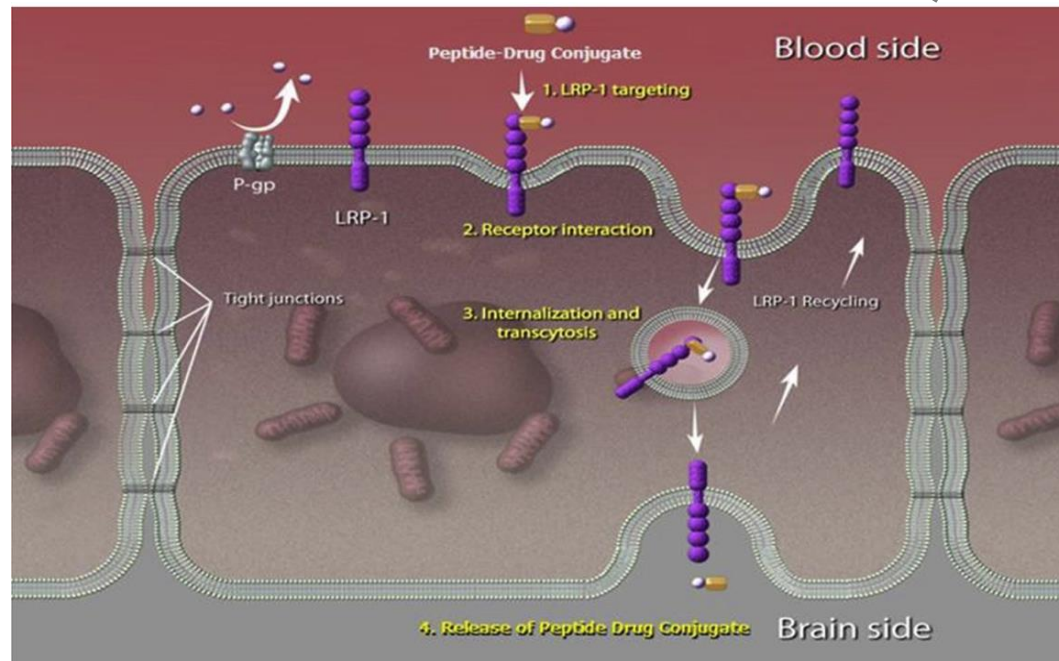
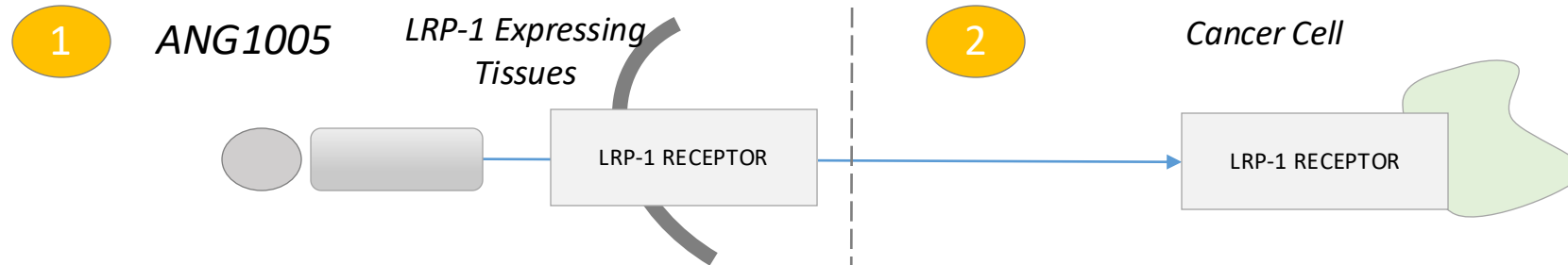


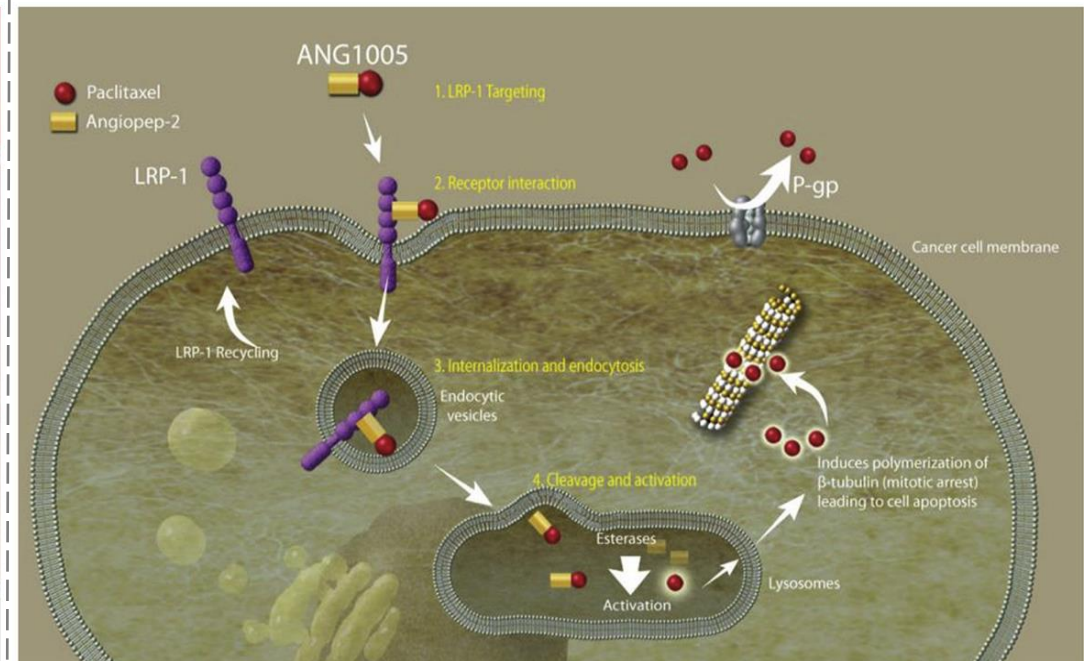
# ANG1005 Clinically Validates the Angiopep PDC Platform

- Lead product, ANG1005, addresses unmet clinical needs in oncology targeting tumor cells



Angiopep mediates transport across

LRP-1 Expressing Tissues (BBB depicted above)



LRP-1 mediates transport to target cells

Sources: 2016 ASCO Presentation; Kumthekar, *et al*, Drappatz, *et al*; Clin Cancer Res March 15 2013 (19) (6) 1567-1576; DOI: 10.1158/1078-0432.CCR-12-2481 . Li, F., & Tang, S. C. (2017). Targeting metastatic breast cancer with ANG1005, a novel peptide-paclitaxel conjugate that crosses the blood-brain-barrier (BBB).